



15/15 Flynn Street Churchlands, WA



Location, Convenience & Outdoor Living!

Nestled within a neat, well maintained and secure complex, this home offers an exclusive and peaceful community experience.

As you enter, you are greeted by a spacious front north facing courtyard. This captivating space is perfect for a relaxing morning coffee or all year round entertaining. Beyond this, you will discover an inviting main living area and spacious kitchen.

Conveniently both bedrooms are located upstairs and feature built in robes. With its low-maintenance design, this home is ideal for those seeking a hassle-free lifestyle.

Council Rates: \$371.16 p/q

Water Rates: \$251.07 p/q

Strata Rates: \$670.00 p/q

Strata Fees: \$670 per quarter

* Split system air-conditioning in the main b

Troy Houlahan

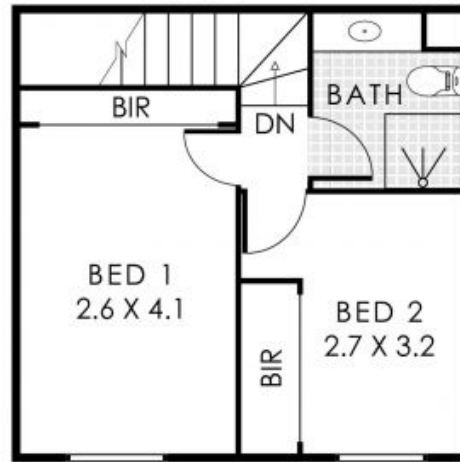
0411 127 920

Katie Houlahan

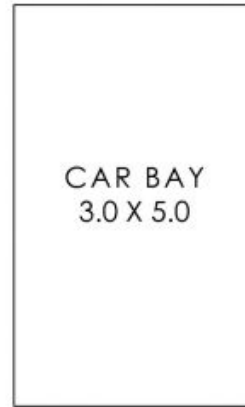
0401 283 932



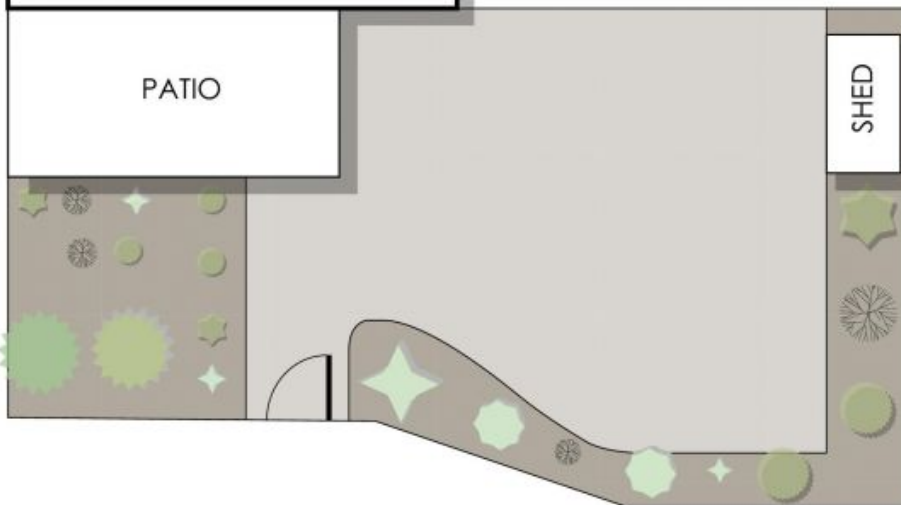
GROUND FLOOR



FIRST FLOOR



(NOT ACTUAL LOCATION)



15/15 Flynn Street, Churchlands

Residence 62m² | Patio 8m² | Car Bay 15m²
Total Area 85m²

15/15 Flynn Street

Churchlands, WA

DRIVEN
 property group

We make every effort to ensure that the information provided in this floor plan is accurate and reliable. However, we do not warrant the accuracy or reliability of the information. It is to be used for any other purpose. www.citicreative.com.au